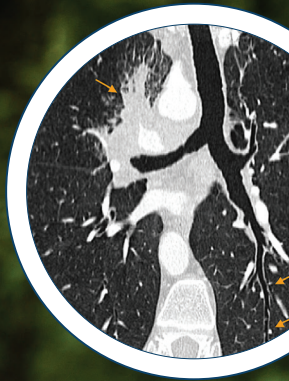


BREATHE EASIER



**A physician's
guide to
Low-Dose
CT Lung
Screening**

RIS
RADIOLOGY AND IMAGING SPECIALISTS



LOW DOSE LUNG CT SCREENING

FOR YOUR AT-RISK PATIENTS IS EFFECTIVE

Studies have shown that current and former smokers, evaluated with low dose CT, have a much greater survival rate than those evaluated with other methods. What's more, low dose CT can find smaller, earlier stage and more treatable cancers than X-ray, at a significantly lower radiation dose than a standard chest CT.

Which of my patients are eligible?

A Low Dose Lung CT Scan requires pre-authorization from commercial payers (CPT: S8032). In order for you to obtain an authorization number, your patients must meet the following criteria:

- USPSTF Recommends annual screening for adults aged 50-80 with 20 pack smoking years
- No signs or symptoms of lung cancer
- 20-pack years or greater of tobacco smoking (cigar and non-cigarette smokers are not eligible)
- Current smokers or quit smoking within the last 15 years, AND
- Written order for Low Dose Lung CT Screening from a qualified health professional following a lung cancer screening counseling that attests to shared decision-making having taken place before their first screening CT

What is required of my practice?

For the initial LDCT lung cancer screening service, a written or electronic order is required from a qualified health professional following a lung cancer screening counseling and with attestation to shared decision-making having taken place.

For the subsequent screening services, a written electronic order is required which may be furnished during any appropriate visit from a qualified health professional.

For both the initial and subsequent lung cancer screening services, a written order is required to include:

1. Actual number of pack years smoked
2. Current smoking status, and for former smokers, the number of years since quitting smoking
3. Statement that the beneficiary is asymptomatic (no signs or symptoms of lung cancer)

Are there any decision aid tools available for the shared decision-making visit?

Yes, we are happy to provide you with patient information for decision aids as well as smoking cessation materials. We are also happy to provide you with a patient brochure that explains the lung screening program in greater detail.



In addition, a shared decision-making aid with risk calculator is available at www.ShouldIScreen.com.

How do I bill for the shared decision-making visit?

Please reference The American Thoracic Society (ATS) coding recommendation published online: www.thoracic.org/about/newsroom/newsletters/coding-and-billing/.



Reference the counseling visit to discuss need for lung cancer screening (LDCT) using low-dose CT Scan (service is for eligibility determination and shared decision-making).

DID YOU KNOW...?

A low dose lung CT screening carries an overall average effective dose of less than 2 mSv as compared with an average effective dose of 7 mSv for a typical standard-dose chest CT examination.

Source: Larke et al. 2011 Estimated Radiation Dose Associated With Low-Dose Chest CT of Average-Size Participants in the National Lung Screening Trial

WHO QUALIFIES FOR A LUNG SCREENING PROGRAM?

Adults aged 50 to 80 years who have a 20 pack-year smoking history and currently smoke or have quit within the past 15 years.

According to the U.S. Preventive Services Task Force, screening should be discontinued once a person has not smoked for 15 years or develops a health problem that substantially limits life expectancy or the ability or willingness to have curative lung surgery.



For your patients at risk for lung cancer, help them breathe easier with low-dose CT lung screening from RIS. For more information, or to schedule your patient's examination, please call 863-688-2334.

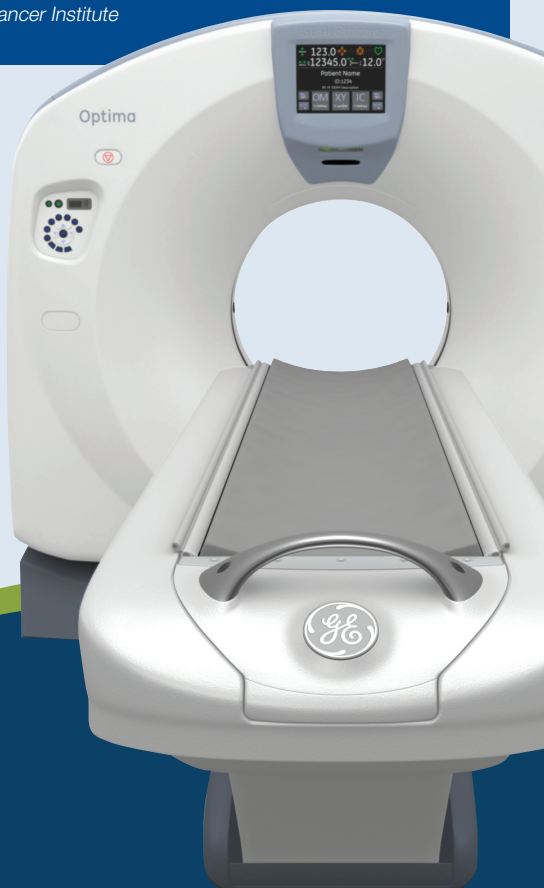
National Lung Screening Trial (NLST) Facts:



NLST primary trial results show 20 percent fewer lung cancer deaths among trial participants screened with low-dose helical CT (also known as spiral CT) compared to those who got screened with chest X-rays.

An ancillary finding, which was not the main endpoint of the trial's design, showed that all-cause mortality (deaths due to any factor, including lung cancer) was 6.7 percent lower in those screened with low-dose helical CT. A substantial portion of this lower rate was attributable to lung cancer.

Source: National Cancer Institute





RADIOLOGY AND IMAGING SPECIALISTS (RIS)

Since 1970, the radiologists of Radiology & Imaging Specialists (RIS) have provided exceptional service to physicians and their patients throughout Central Florida. From our humble beginnings with just three doctors and a single office, we have grown to become the leading radiology provider in Polk and Osceola counties. Today, with more than 50 physicians, three hospital affiliates, five imaging centers and two clinics, we deliver expertise and convenience to our referring physicians and exceptional, seamless care to their patients.



risimaging.com
(863) 688-2334